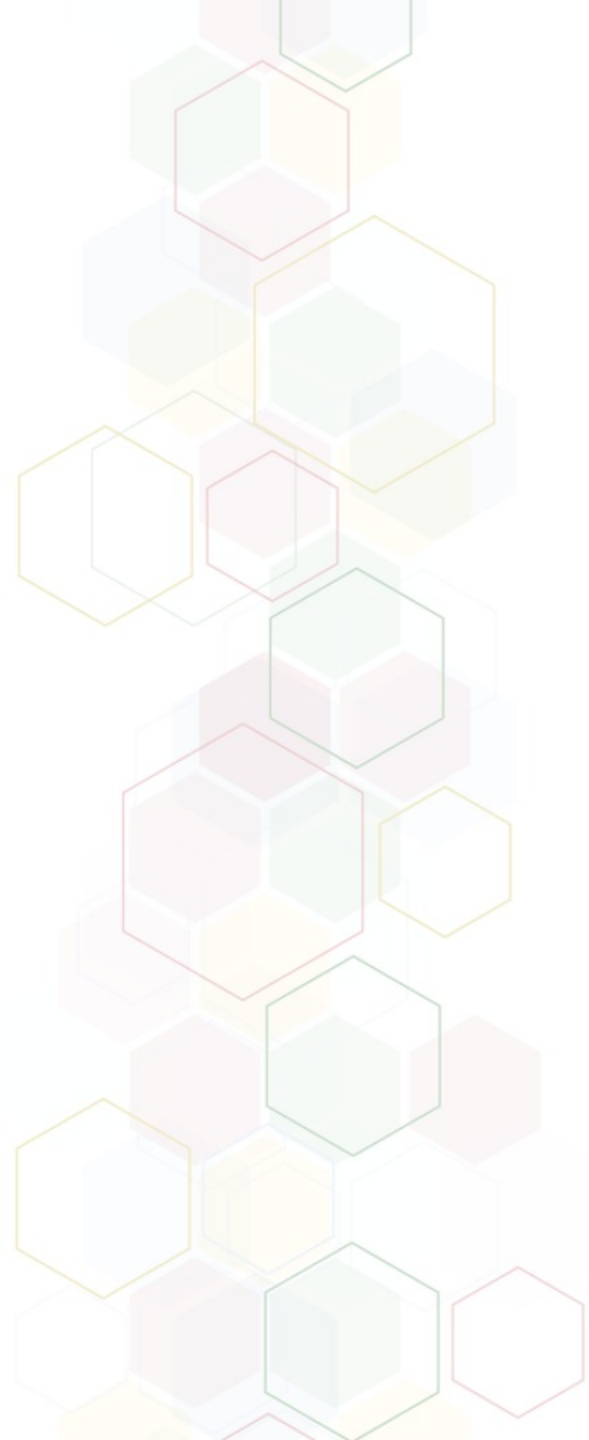


# ManageEngine

**IT management, simplified**

Real-time IT management solution for the new speed of business



# ManageEngine is the enterprise IT management software division of Zoho Corporation



Applications for business, collaboration, and productivity

(Est. 2005)

**ManageEngine**

Enterprise IT management solutions

(Est. 2002)



Enterprise Internet of Things & unified network management solutions

(Est. 1996)



Privately held and profitable since inception

(Est. 1996)



# ManageEngine

A bootstrapped, private, and profitable company

**19+**

Years in the industry

**90+**

Products and free tools  
for IT management

**190+**

Countries

**180,000+**

Organizations across the  
globe use our products

**3,500+**

ManageEngine employees

# ManageEngine For MSPs



**IT service management**  
ServiceDesk Plus MSP



**Remote monitoring & Management**  
RMM Central



**Unified Endpoint Management**  
Desktop central MSP



**IT operations management**  
OpManager MSP



**Mobile Device management**  
Mobile Device manager plus MSP



**Cloud-based Remote Monitoring**  
Site24x7



**Privileged access management**  
PAM360



**Privileged account management**  
Password Manager Pro MSP

# ManageEngine RMM Central

Remote Monitoring and Management solution - Product Overview





**Why do MSPs need an RMM solution?**

# RMM Solution

```
graph TD; A[RMM Solution] -.- B[Enhanced and automated IT security]; A -.- C[Real-time monitoring and alerts]; A -.- D[Complete visibility and control of the network]; A -.- E[Increased ROI]; A -.- F[Minimized cost, effort and time]; A -.- G[Critical IT management automation]; A -.- H[Powerful reports and analytics];
```

Enhanced and automated IT security

Real-time monitoring and alerts

Complete visibility and control of the network

Increased ROI

Minimized cost, effort and time

Critical IT management automation

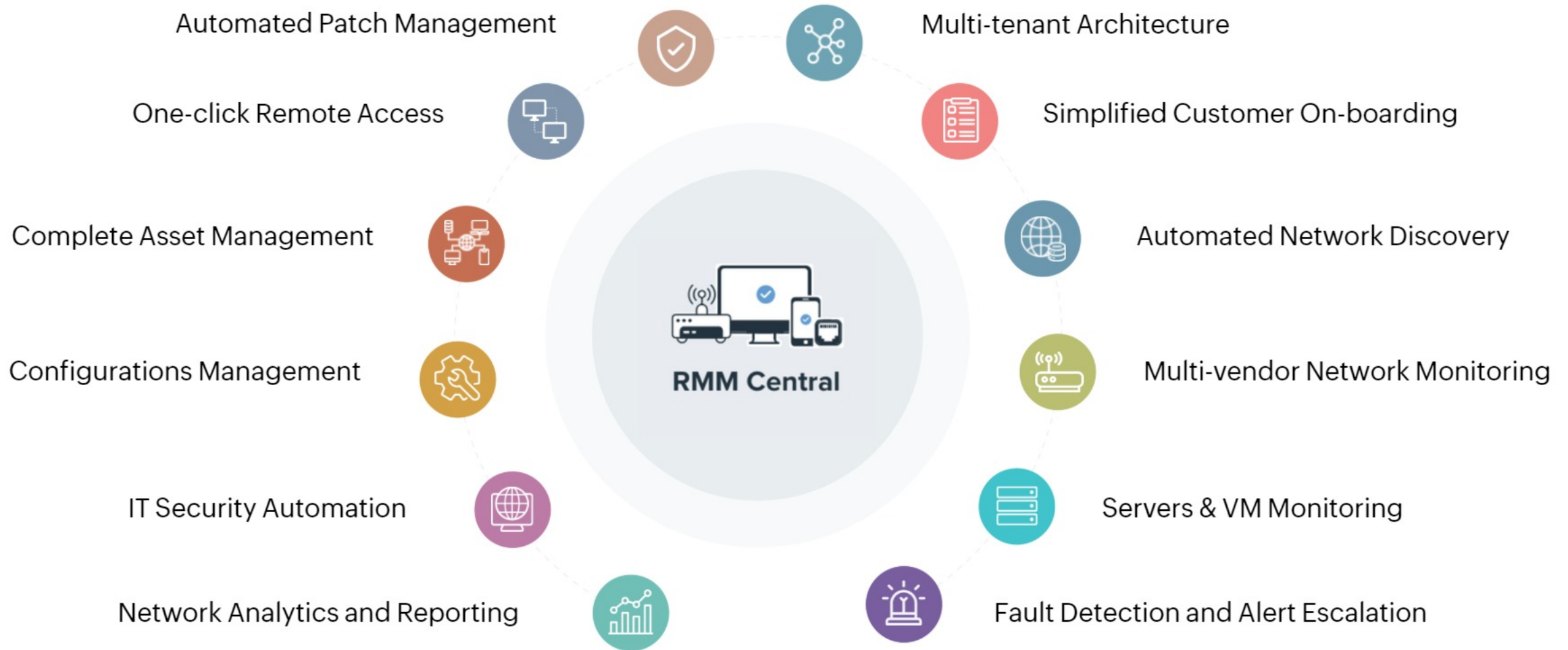
Powerful reports and analytics



**What is RMM Central?**



# Features Overview



# Unified solution for network monitoring and endpoint management



Discover



Manage



Monitor



Secure

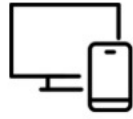
All devices from a single console

# RMM Central



## Device Management

Desktops, laptops, servers, mobile devices, tablets, chromebooks, browsers & point-of-sale devices.



## Device Monitoring

Routers, switches, firewalls, load balancers, Access Points, servers, (VMs), printers, & storage devices.



## Supported Server OS

Windows, Linux, Unix, Solaris, VMware, Hyper-V, Nutanix and Xen platforms.



## Supported OS for management

Windows, Mac, Linux, Android, iOS, tvOS, ChromOS, iPadOS



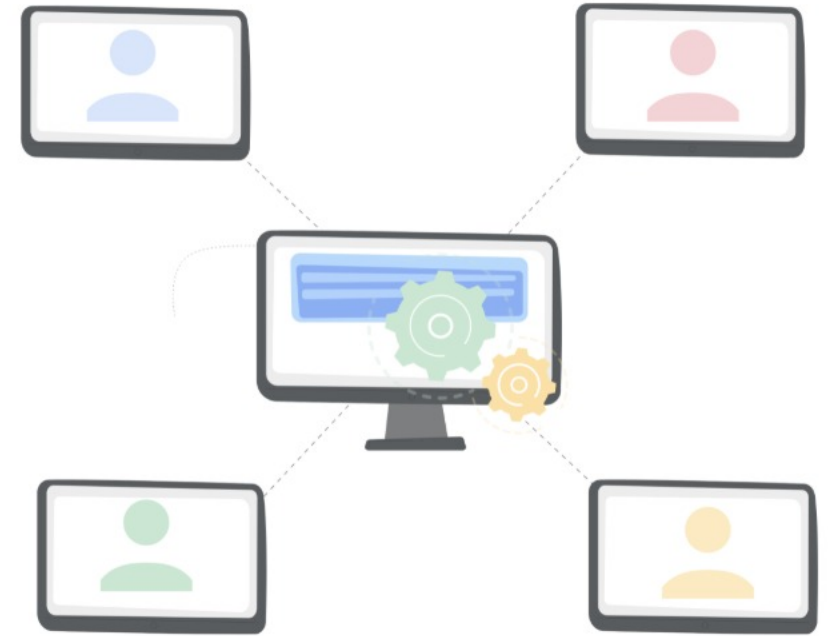
# RMM Central features - Explained

# Multi-tenant architecture

- Handle the network operations of multiple clients concurrently and from a central console.

## Benefits:

- Monitor multiple clients simultaneously.
- Probe-agent architecture helps to handle multiple clients concurrently.
- In-depth monitoring and capacity forecasting in client networks.
- Data segmentation between clients.

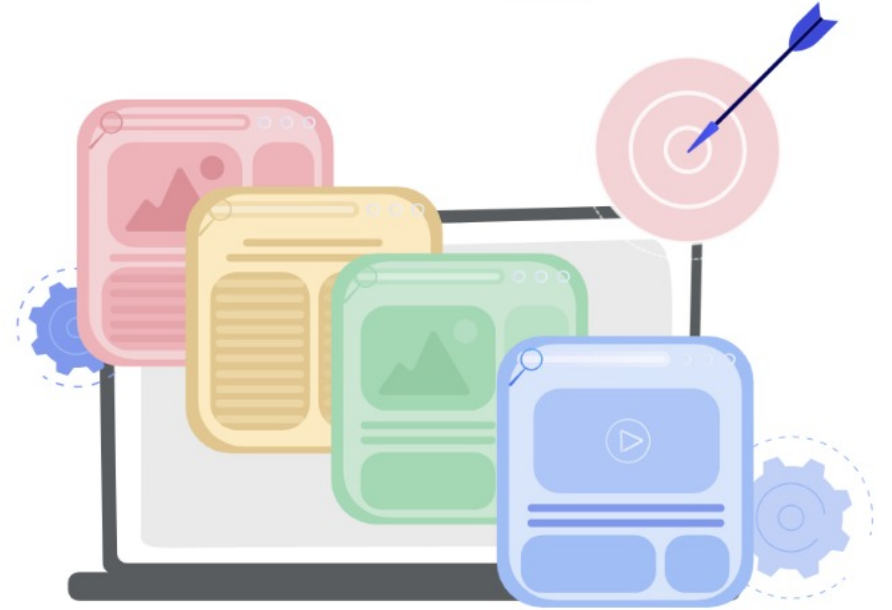


# Simplified customer on-boarding

- Easy device provisioning and onboarding customers into the network.

## Benefits:

- Transparent system setup
- Client-centric dashboard views.
- Customer-specific user account creation Independent technician account creation.



# Automated network discovery

- Discover devices in their network in one go, monitor business-specific metrics, and maintain a healthy network infrastructure.

## Benefits:

- Device discovery based on IP range, CSV, AD, or Subnets.
- Addition of new devices into the network by periodic scan.
- Filter unwanted devices using Approve/Ignore mechanism.
- Automate monitor association, event log rules, and more.

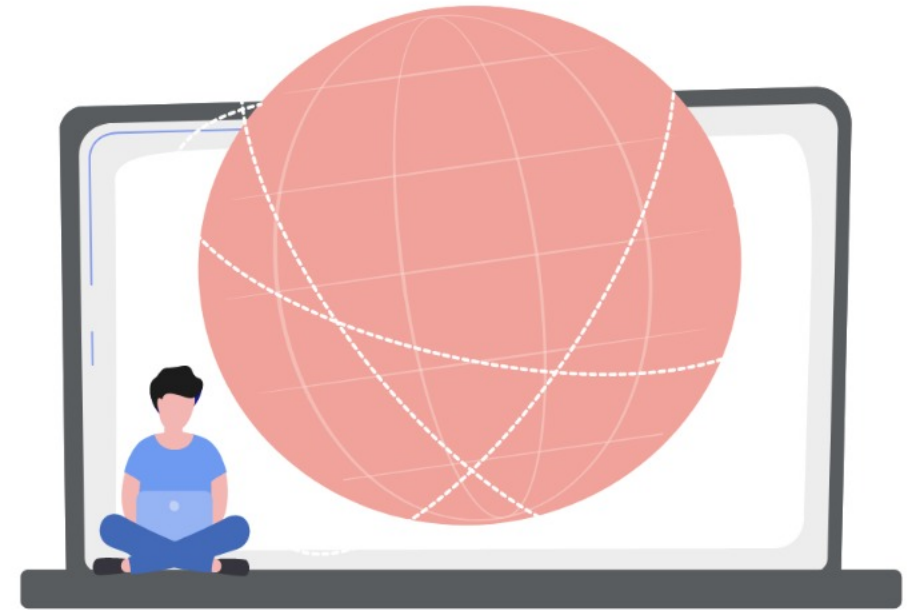


# Multi-vendor network monitoring

- Unified heterogeneous platform platform to manage network devices from diverse vendors.

## Benefits:

- Multi-vendor support for network devices.
- Monitor crucial performance metrics for routers, switches, & servers.
- Use custom SNMP monitors to track device-level custom metrics using avendor SNMP MIBs.



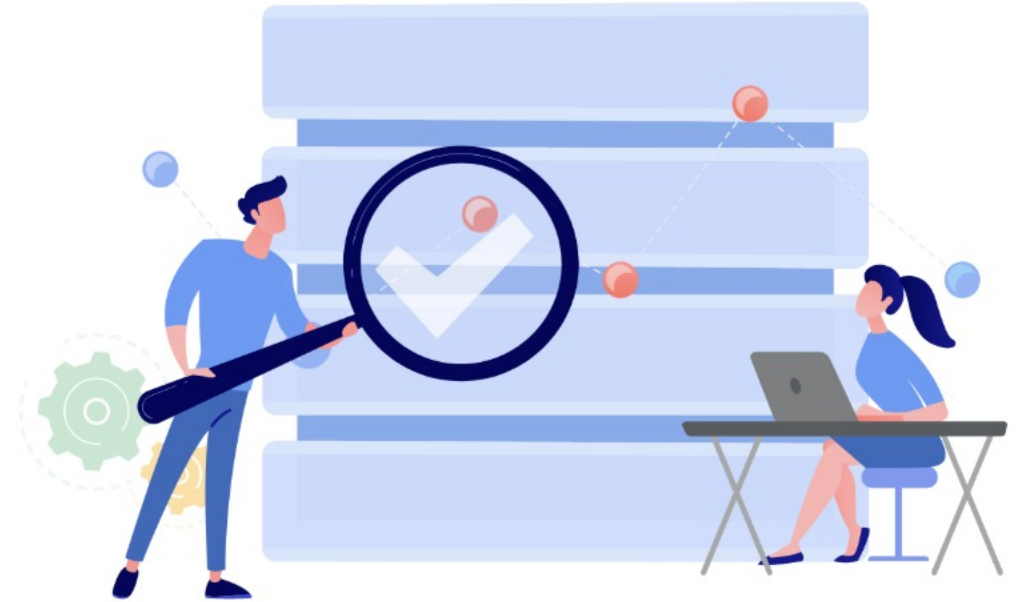


# Servers and VM monitoring

- Monitor a server's system resources like CPU Usage, Memory Consumption, I/O, Network, Disk Usage, Process etc.

## Benefits:

- Seamless discovery of virtual clusters, hosts, VMs, and data stores.
- Real-time virtual network monitoring
- Map the topology of virtual network for visualization.
- Capacity planning and identification of underutilized resources.
- VM specific performance and health reports.



# Fault detection and alert escalation

- Identify the root cause of the problem and fix it by implementing advanced alert monitoring capabilities.

## Benefits:

- Fault isolation
- Alarm acknowledgement, suppression, and escalation
- Alarm notification profiles
- Event-Alarm Correlation, Color-coded Alarms & Event History

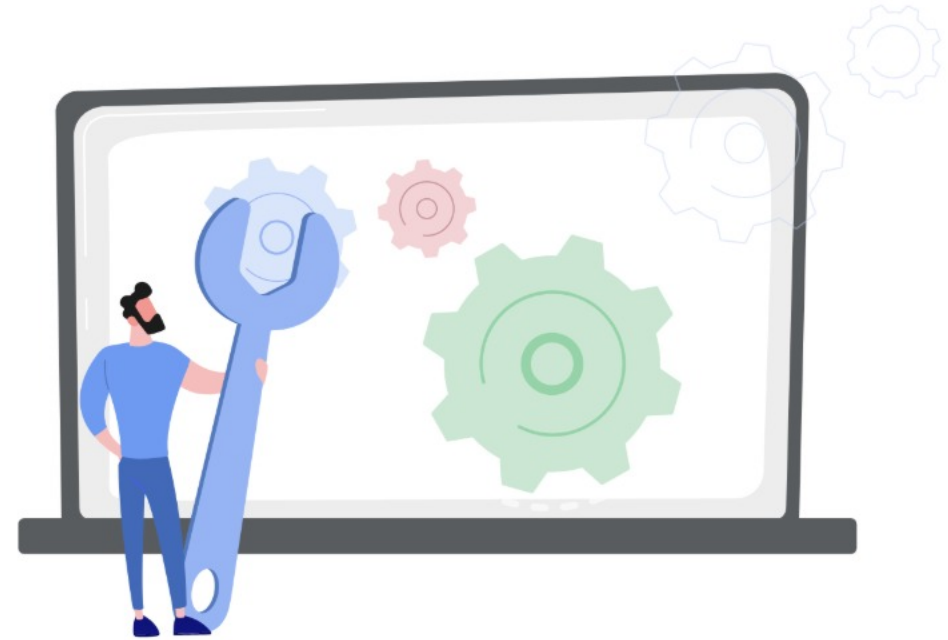


# Automated Patch Management

- Patch lifecycle management for Windows, Mac, Linux, and 1000+ 3rd party applications.

## Benefits:

- Proactively detect and deploy missing patches.
- Mitigate security risks by testing patches prior to bulk deployment.
- Deploy critical zero-day patches.
- Disable auto-updates and decline patches as needed.

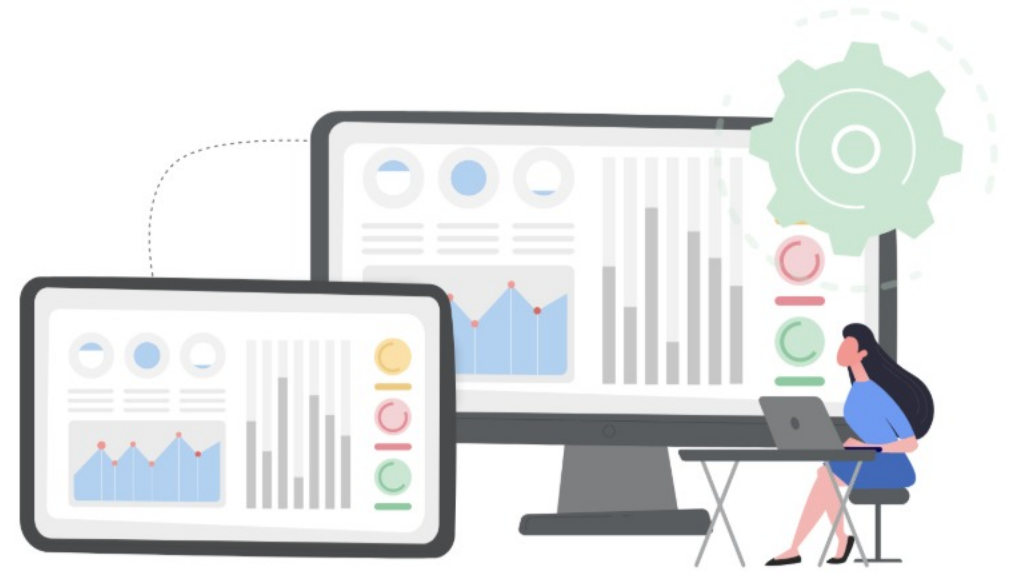


# One-click remote access

- Leverage secure remote control for troubleshooting devices from a central location.

## Benefits:

- Collaboration with multiple users during remote session.
- No user interaction required for monitoring system management tasks.
- Lock end users' keyboards, mouse, and black-out their screens to ensure confidentiality.
- Communication through integrated video, call, chat; and file transfer between machines.

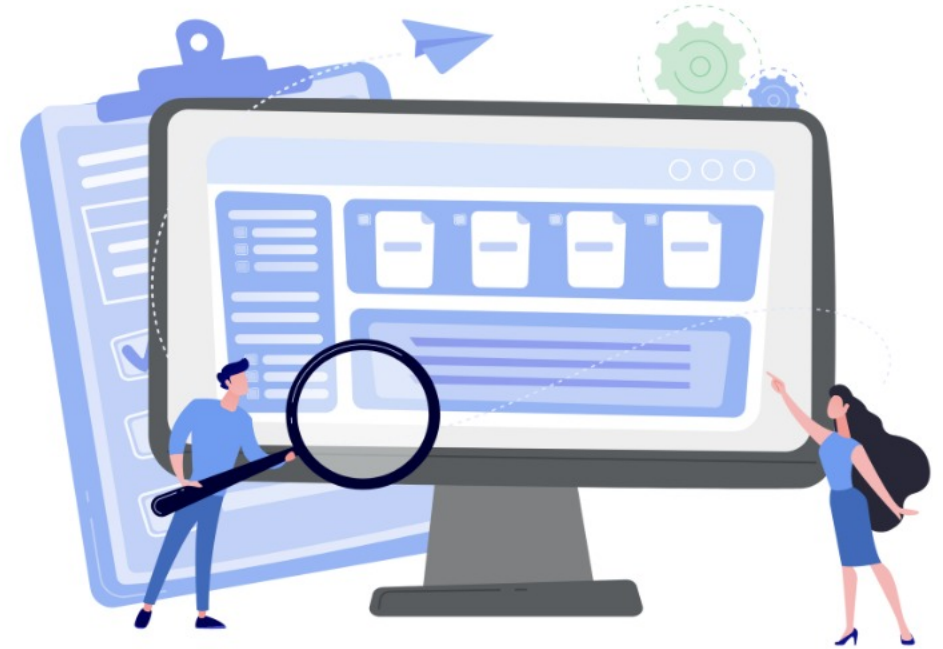


# Complete Asset Management

- 360 degree view of software and hardware assets within your network live with predefined inventory reports.

## Benefits:

- Software license compliance status update.
- Uninstall malicious software.
- Analysis of software usage statistics.
- Notifications for detection of new software, non-compliance, and prohibited software.



# Configurations Management

- Standardize profile settings and security policies with 50+ management and security configurations.

## Benefits:

- Regulate access to corporate accounts including email, Wi-Fi, and VPN accounts.
- Create a logical group of devices based on department or location.
- Manage external devices connected to the network
- Execute custom scripts to accomplish specific tasks.



# Network Analytics and Reporting

- Ease-of-access to details with 100+ reports that can be customized based on user requirements.

## Benefits:

- User and customer-specific reporting
- Custom reports generation
- Schedule reports in required formats
- Forecast reports for capacity planning
- Advanced reports covering multiple categories



# New benchmark for IT Security

- Deploy **security policies** customized to each network
- Restrict **user access**
- Discover **faults** in the network & receive real-time alerts
- Detect and **remediate security issues**
- Detect and **proactive patch** & update applications.
- **Remotely lock devices** to prevent the misuse of lost or stolen devices.
- Track devices in real time with **geo-location tracking**.
- Perform a **corporate wipe** to leave personal data intact in BYOD devices.







**Why to choose RMM Central?**

# RMM Central

Foresee no data overlap  
between clients

Flexible, easy-to-use  
and cost-effective  
solution

Proactive IT security  
plan for every client  
network

One solution for network  
monitoring & endpoint  
management

Customized solution for  
the MSP market with 10+  
years experience

Simplified licensing  
model

# Pricing

Pricing starts at **\$24/device/year**.

Visit the below page for more details:

<https://store.manageengine.com/remote-monitoring-management/>

---

To explore RMM Central further, download a 30-day free trial edition of the product.

<https://www.manageengine.com/remote-monitoring-management/download.html>

# Quick Links

<https://www.manageengine.com/remote-monitoring-management/>

## System Requirements

<https://www.manageengine.com/remote-monitoring-management/system-requirements.html>

## How tos

<https://www.manageengine.com/remote-monitoring-management/how-to.html>

## FAQs

<https://www.manageengine.com/remote-monitoring-management/faq.html>

## Help documents

<https://www.manageengine.com/remote-monitoring-management/help/index.html>

## Knowledge Base

<https://www.manageengine.com/remote-monitoring-management/knowledge-base.html>

