

# ManageEngine

IT Management, Simplified

Real-time IT management solution for the new speed of business

# ManageEngine

Enterprise IT management software division of Zoho Corporation

Founded in 1996 as AdventNet

Privately held, Rock solid Supplier and Partner

Headquartered in Pleasanton, California

Millions of customers across industries

# ManageEngine - the Enterprise IT Management division of **ZOHO** Corporation



(Est. 1996)

Privately held, profitable  
since inception

(Est. 2005)



**Work.Online**

Applications for Business,  
Collaboration, and  
Productivity

(Est. 2002)

**ManageEngine**

Enterprise IT Management Solutions

(Est. 1996)



Enterprise Internet of Things and  
Unified Network Management Solutions

# ManageEngine **Solutions**



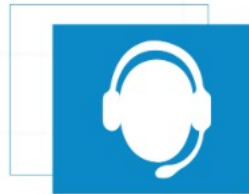
## Active Directory Management

- Active Directory
- Exchange Server
- Self-service Portal
- Recovery and Backup



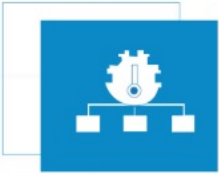
## Endpoint Management

- Desktop Management
- Mobile Device Management
- OS Deployment
- Patch Management
- Browser Management
- Vulnerability Management



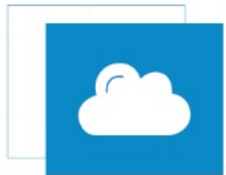
## IT Service Management

- Help Desk
- Asset Lifecycle
- CMDB and ITIL
- Customer Support



## IT Operations Management

- Network Performance
- Application Performance
- End user Experience
- Network Change and Configuration
- Converged Infrastructure
- Storage Infrastructure
- Bandwidth and Traffic
- SQL Server Monitoring



## On Demand

- Application Performance
- Helpdesk Software
- Active Directory Recovery and Backup
- Mobile Device Management
- Patch Management
- Log Management



## IT Security

- Log Management
- Firewall Analysis
- Vulnerability Analysis
- Privileged Password
- Network Anomaly Detection

# 3 Million Users

9 of every 10 Fortune 100 companies are ManageEngine customers



**Why Mobile Device Manager Plus MSP ?**

# **Multi-tenant platform for MSPs**

**Isolated instances for each customer**

**White label the software with your organization logo**



## **Support for all environments**

**Modern and legacy management across BYOD, COPE,  
CYOD, COSU etc**

## **Simple, affordable and easy to use**

**Simplified user interface and an easy set-up that does not require costly consultants or a long time to get started**

# **Automated device management**

**From onboarding of devices to distributing apps and applying corporate security policies**

# **Comprehensive security for your mobile endpoints**

**Secure sensitive business data at rest, in use  
and in transit**

## **Meet privacy and compliance standards**

**From CJIS, PCI DSS and ISO to HIPAA and GDPR, ensure regulatory compliance with ease**

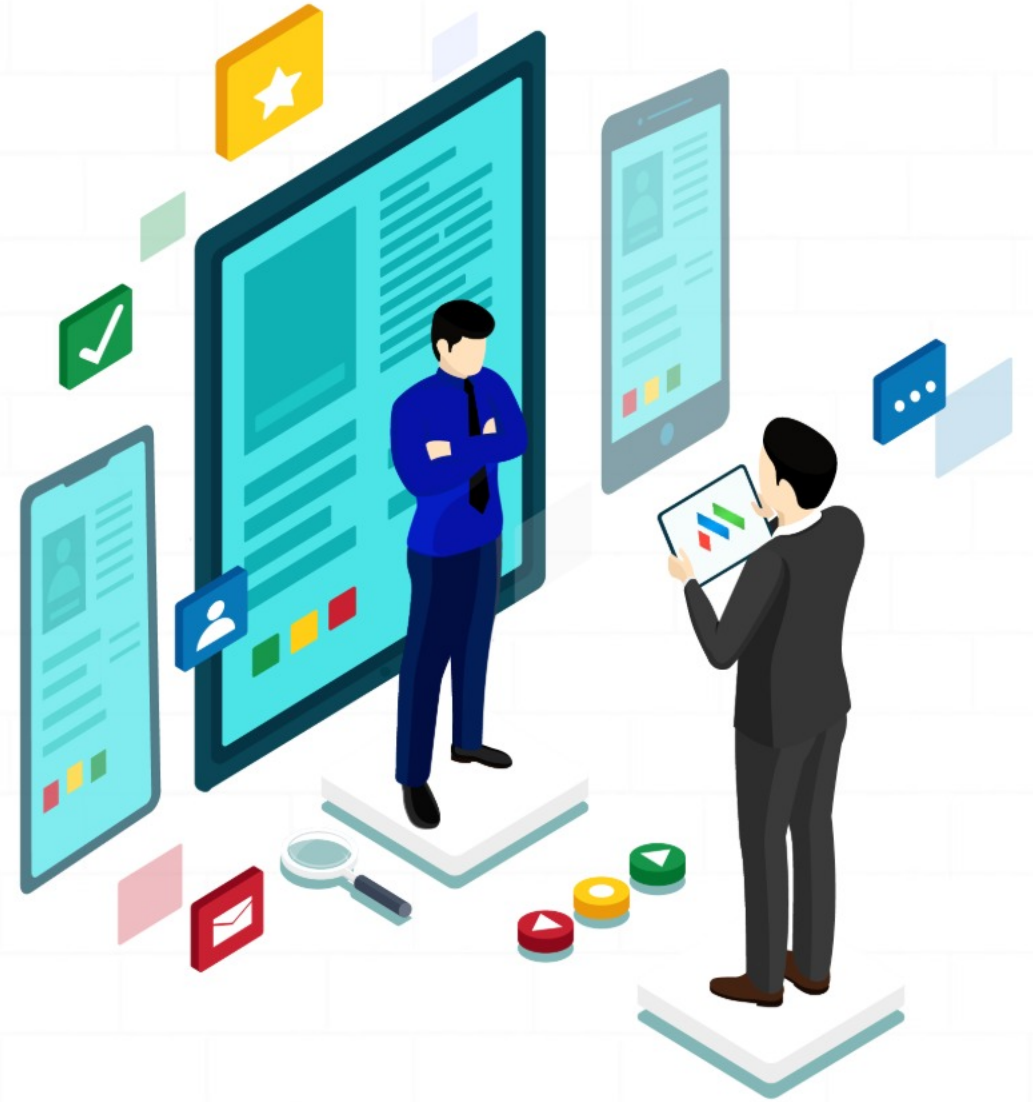
# **One-stop shop for all your IT management needs**

**Seamless integration with solutions that have been built  
from the ground up**

ManageEngine

# Mobile Device Manager Plus MSP

## Product Overview



# Supported OS



## **iOS**

versions 4.0 and above

## **iPadOS**

Version 13.0 and above

iPhone, iPad, iPod Touch



## **macOS**

versions 10.7 and above

Laptops



## **tvOS**

versions 7.0 and above

TVs



## **Chrome OS**

versions 57.0 and above

Chromebooks



## **Windows**

versions 8 and above

Smartphones, tablets & laptops (ver.10), Surface Hubs



## **Android**

versions 4.0 and above

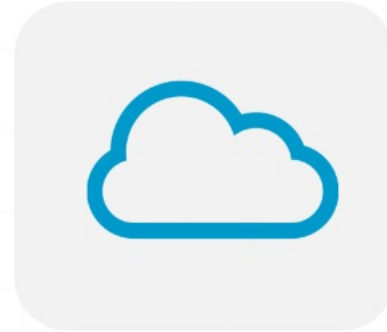
Smartphones and tablets



# Deployment Options



**On-premises**



**Cloud**

# Feature Highlights



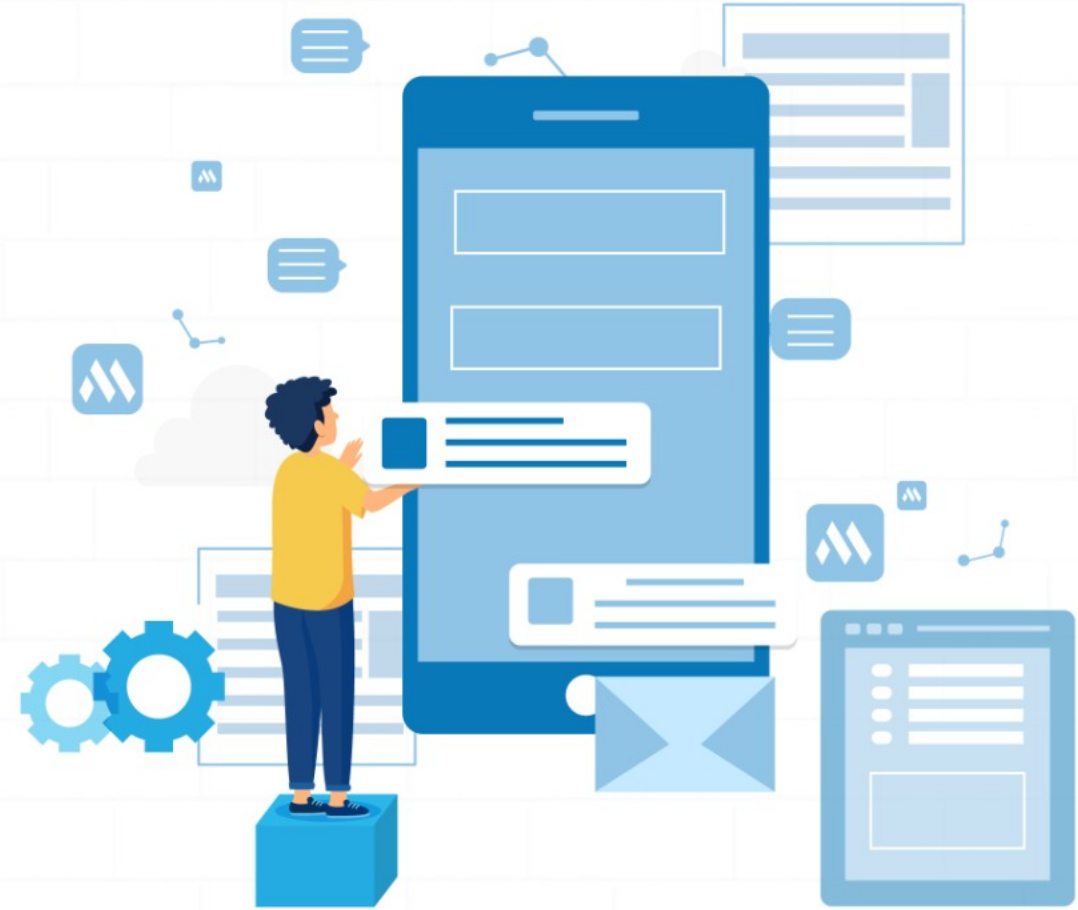
# Device Onboarding

## ❖ Automated Device Enrollment

- Apple:
  - Apple Business Manager (ABM)
  - Apple Configurator
- Android Admin Enrollment
  - Zero-touch Enrollment
  - Samsung Knox Mobile Enrollment
  - EMM Token Enrollment
  - NFC Enrollment
- Windows ICD and Azure (Autopilot) Enrollment
- Chrome OS Enrollment

## ❖ Enrollment by invite

- Manual enrollment through QR code scanning
- Bulk Enrollment via CSV
- SMS Enrollment



# Asset Management

- ❖ Troubleshoot devices by remotely taking control of them from your desk without requiring additional apps/services
- ❖ Instantly know the location of corporate devices
- ❖ View the history of all locations traversed by the devices
- ❖ View the location of all your devices at the same time on a single map
- ❖ Automatically get complete details of the device such as network information, certificates etc.
- ❖ Schedule scans to automate periodic update of device information



# Profile Management

## ❖ Security Hardening of devices

- Enforce a strong passcode on devices to adhere to enterprise's security standards
- Relieve users from password fatigue using Enterprise Single Sign-on
- Prevent unauthorized data access by ensuring organizations can use only trusted Wi-Fi networks
- Have your essential contacts and important calendar events synced to employee's devices
- Disable basic device features/settings such as Bluetooth, camera, calls, SMS, external storage, factory reset etc.



# Profile Management

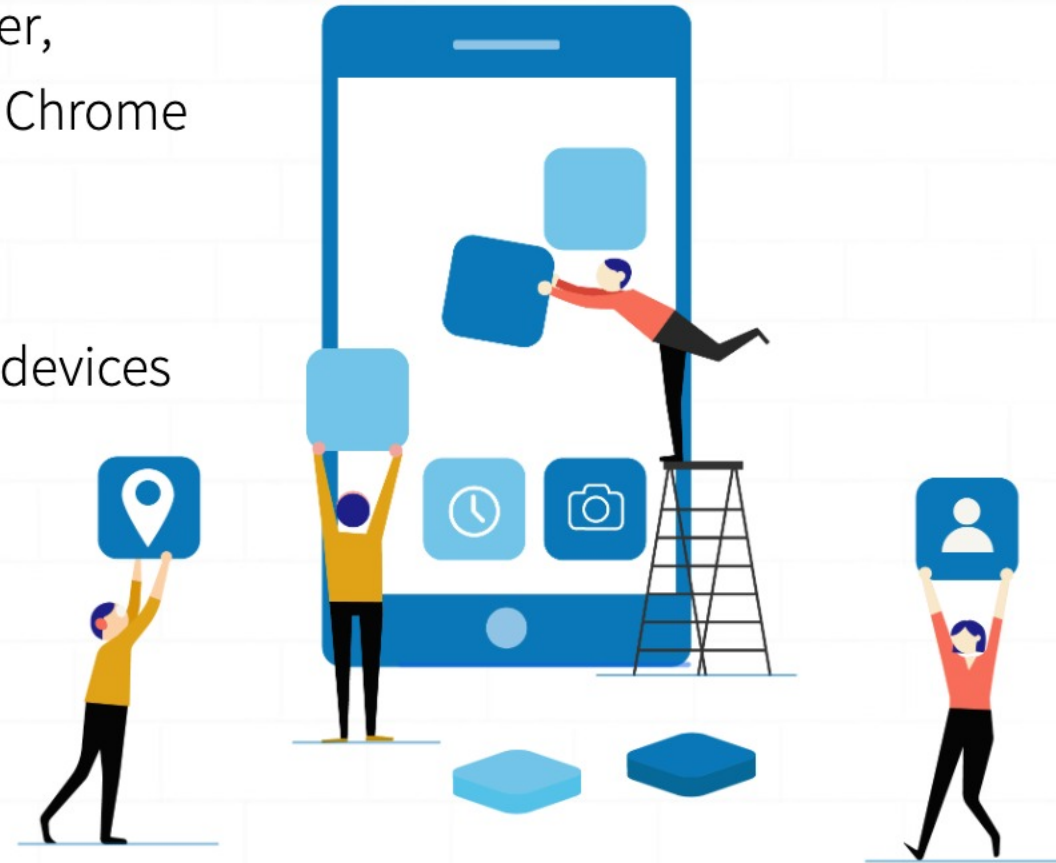
## ❖ Security Hardening of devices

- Ensure secure access of corporate data from anywhere and anytime using VPN and per-app VPN
- Prevent access to malicious and unapproved websites through URL filtering
- Facilitate certificate-based authentication by pushing user-specific security certificates using SCEP
- Secure network communications by ensuring it is routed through the enterprise proxy
- Apply enterprise specific configurations to devices using Custom Configurations



# App Management

- ❖ Create and maintain enterprise app catalog containing only enterprise-approved apps
  - Bulk purchase of Store apps (Apple Business Manager, Managed Google Play, Windows Business Store and Chrome Web Store)
  - Custom business apps/enterprise apps
  - Manage app licenses and revoke/reuse apps across devices
- ❖ Install/Uninstall apps without any user intervention
- ❖ Blacklist non-productive apps and prevent its usage/installation on devices



# App Management

- ❖ Lock down devices to a specific app or a set of approved apps, while pre-configuring settings and preventing users from modifying them
- ❖ Restrict users from uninstalling corporate apps, ensuring there is no drop in productivity
- ❖ Restrict users from updating specific apps while ensuring critical app updates are deployed immediately without any user intervention and minimal admin action
- ❖ Pre-define app configurations and permissions, ensuring the apps are ready to use on installation
- ❖ Deploy enterprise apps to your production environment after testing them on a test bed





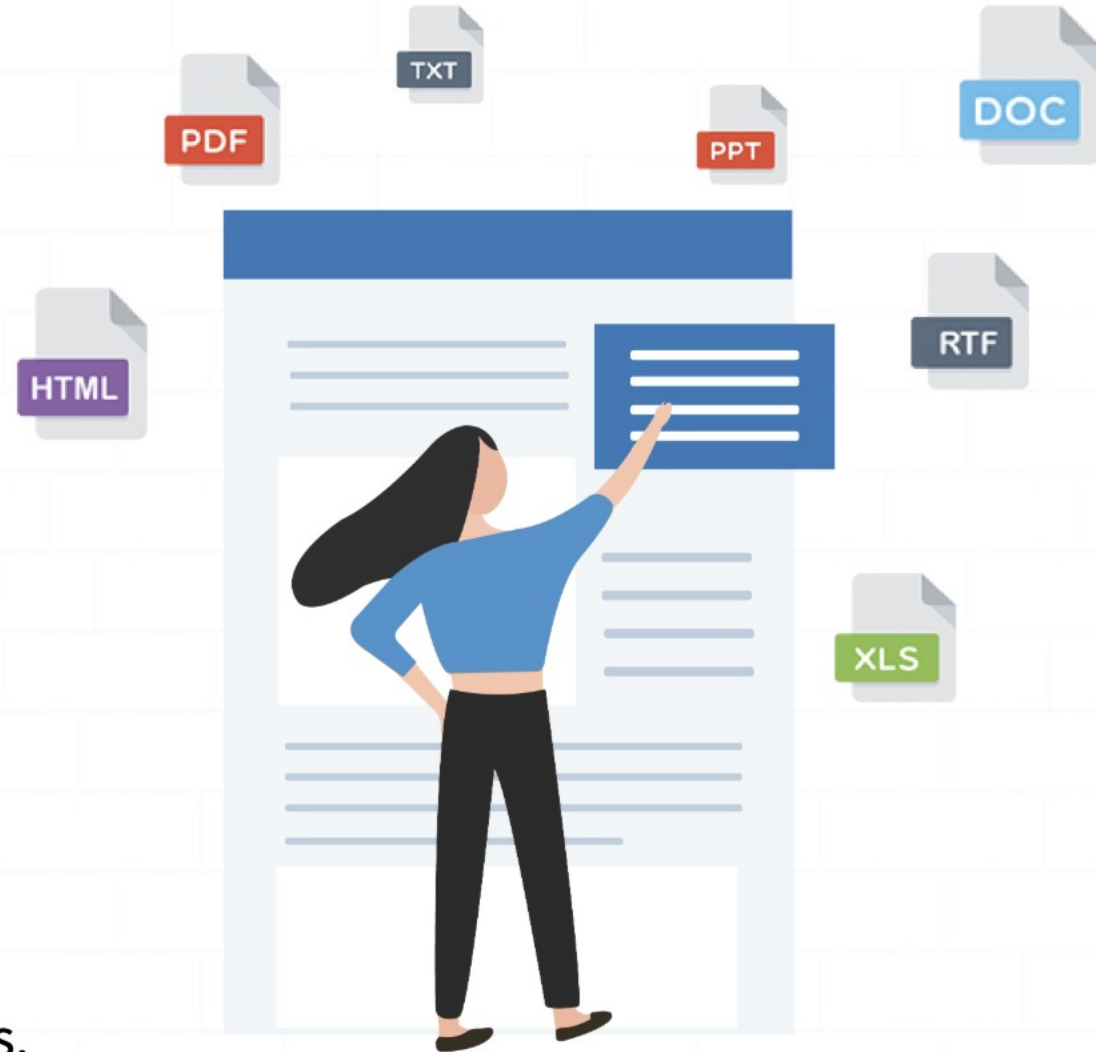
# E-mail Management

- ❖ Pre-configure your work email on devices with the requisite settings using Exchange ActiveSync
- ❖ Prevent the transfer of emails from corporate accounts to user's personal accounts
- ❖ Securely download and view confidential corporate attachments on the ManageEngine MDM app



# Content Management

- ❖ Create a repository containing critical business documents and media files
- ❖ Securely share files in multiple formats to devices without depending on any third-party services
- ❖ Sandbox your corporate documents to securely view distributed content from the ManageEngine MDM app
- ❖ Prevent the backup of corporate data on third-party cloud services and restrict sharing it to other devices
- ❖ Automate content update on mobile devices
- ❖ Centralized removal of content from managed devices.



# Security Management

- ❖ Enforce and automate OS updates to prevent ad-hoc updates and bandwidth choking
- ❖ Apply security restrictions on devices when they leave a designated area with geofencing
- ❖ Lock down lost or stolen devices using Lost Mode
- ❖ Secure data on devices and external storage with enforced encryption
- ❖ Overcome the hassles of Factory Reset Protection with EFRP
- ❖ Apply security policies to Office 365 apps even when installed on unmanaged devices



# Security Management

- ❖ Remotely lock devices to prevent unauthorized access
- ❖ Wipe the corporate data or the complete device when lost or stolen
- ❖ Clear or reset device passcode with a single click
- ❖ Locate misplaced devices by remotely ringing an alarm
- ❖ Detect and remove jailbroken/rooted device from your organization's network



# Bring Your Own Device (BYOD)

- ❖ Containerization of corporate data
- ❖ User's personal data will be untouched
- ❖ Separate profile strategy to secure corporate data on employee owned devices
- ❖ Restrict corporate data sharing between
  - corporate and personal apps
  - managed and unmanaged devices
  - device and third-party cloud services
- ❖ Effective management of multiple device types



# Laptop Management

- ❖ Enroll Windows 10 laptops and Macs over-the-air
- ❖ Distribute Store and in-house apps to Windows laptops
- ❖ Lock down Windows laptops to specific app(s)
- ❖ Remotely locate Windows laptops and Macs
- ❖ Secure data on Macs with FileVault encryption and Firmware passwords
- ❖ Remotely restart and wipe Windows laptops



# Reports

- ❖ 10+ pre-defined reports
  - Apps by devices
  - Devices with/without specific app
  - Devices by model
  - Devices by passcode types
  - Device by enrollment time
  - Inactive devices
- ❖ Schedule reports
- ❖ Custom query reports



# Integrations

Mobile Device Manager Plus MSP integrates with ServiceDesk Plus MSP to provide enhanced actionable insights to IT admins



**Know more**

<https://www.manageengine.com/mdm-msp>

**Try it for free!**

<https://www.manageengine.com/mdm-msp-free-trial>